

**FOR IMMEDIATE RELEASE**

March 26, 2021

**Contact:**

Mathew Barewicz, E &amp; LMI Director

**State of Vermont****Department of Labor**[Mathew.Barewicz@vermont.gov](mailto:Mathew.Barewicz@vermont.gov)

802-828-4153

## Vermont's Unemployment Rate Decreases to 3.1 Percent in February

Today, the Vermont Department of Labor released data on the Vermont economy for the time period covering February 2021. According to household data, the seasonally-adjusted statewide unemployment rate for February was 3.1 percent. This reflects a decrease of one-tenth of one percentage point from the prior month's revised estimate of 3.2 percent.

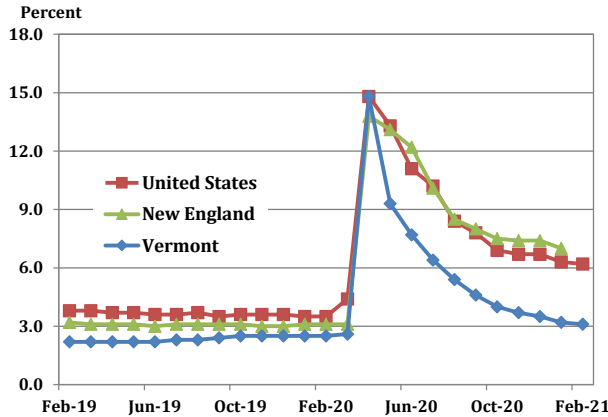
### *Commissioner's Message*

"Employment data is what is called lagging data, as it is always looking in the rearview mirror. In real-time, the economic impacts of the pandemic turned one-year-old this month; however, for this report, we are looking at February 2021. What is interesting about the data in this month's publication, is that since February 2020, the only sector that has experienced over the year job growth is Professional & Technical Services. At its current level, it is tied for a historical high. The reasons for this are twofold – first, this industry has shown greater resilience to the economic disruption of COVID-19 than other sectors because jobs in this sector can more easily be transferred to a virtual work environment or can operate with a high degree of social distancing. Secondly, the long, overall trend for this industry is positive, with some saying it is the future of the American economy. With highly skilled positions in areas such as information technology, finance and accounting, computer programming, and other business-to-business services, this sector is poised for continued growth over the coming years. At the Department of Labor, we are working to increase awareness about jobs in this sector and others, and what type of skills are necessary in order for jobseekers to find meaningful employment. In many cases, individuals can find entry into these career paths through career technical education, post-secondary certificate programs, or a 2-year degree. Visit [www.labor.vermont.gov/jobs](http://www.labor.vermont.gov/jobs) for more information."

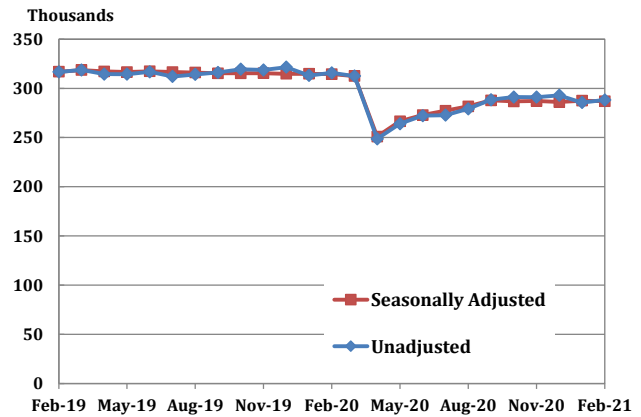
- Michael Harrington, Labor Commissioner



**Chart 1. Unemployment Rate, seasonally adjusted**



**Chart 2. Vermont Nonfarm Payroll Employment**



## State of Vermont Overview

The Vermont seasonally-adjusted unemployment rate decreased by one-tenth of one percentage point to 3.1 percent in February. The comparable United States rate in February was 6.2 percent, which was a decrease of one-tenth of one percentage point from the revised January estimate. The seasonally-adjusted Vermont data for February show the Vermont civilian labor force decreased by 1,351 from the prior month's revised estimate (see Table 1). The number of employed persons decreased by 840 and the number of unemployed persons decreased by 511. The changes to the labor force, the number of unemployed persons and the unemployment rate were statistically significant in the seasonally-adjusted series.

The February unemployment rates for Vermont's 17 labor market areas ranged from 2.6 percent in Northfield-Waitsfield to 4.4 percent in Derby (note: local labor market area unemployment rates are not seasonally-adjusted – see Table 2). For comparison, the February unadjusted unemployment rate for Vermont was 3.3 percent, which was a decrease of four-tenths of one percentage point from the revised unadjusted January level and an increase of seven-tenths of one percentage point from a year ago.

## Analysis of Job Changes by Industry

### Seasonally-Adjusted (Table 3)

The seasonally-adjusted data for February reports a decrease of 500 jobs from the revised January data. There was an increase of 300 jobs between the preliminary and the revised January estimates due to the inclusion of more data. The seasonally-adjusted over-the-month changes in February varied at the industry level. Those with a notable increase include: Arts, Entertainment & Recreation (+300 jobs or +10.3%), Professional and Technical Services (+300 jobs or +1.9%) and Non-Durable Goods Manufacturing (+200 jobs or +1.8%). Industries with a notable decrease include: Real Estate,



Rental & Leasing (-100 jobs or -3.4%), Administrative & Waste Services (-200 jobs or -1.7%) and Private Educational Services (-200 jobs or -1.6%).

**Not-Seasonally-Adjusted** (Table 4)

The preliminary 'not-seasonally-adjusted' jobs estimates for February shows an increase of 2,600 jobs when compared to the revised January numbers. As with the 'seasonally-adjusted' data, this over-the-month change is from the revised January numbers which experienced an increase of 300 jobs from the preliminary estimates. The broader economic picture can be seen by focusing on the over-the-year changes in this data series. As detailed in the preliminary 'not-seasonally-adjusted' February data, Total Private industries have decreased by 23,300 jobs (-9.0%) and Government (including public education) employment has decreased by 4,200 jobs (-7.3%) in the past year.

---

**The Unemployment and Jobs Report for March is scheduled to be released on Friday, April 16, 2021 at 10:00 a.m.**



**Table 1. Vermont Labor Force Estimates, seasonally adjusted**

	February 2021	January 2021	February 2020	Change From:	
				January 2021	February 2020
Civilian Labor Force	313,279	314,630	342,887	-1,351	-29,608
Employed	303,681	304,521	334,270	-840	-30,589
Unemployed	9,598	10,109	8,617	-511	981
Unemployment Rate (%)	3.1	3.2	2.5	-0.1	0.6

Vermont's labor force, employment and unemployment statistics are produced from a combination of a Statewide survey of households and statistical modeling. The data are produced by the Local Area Unemployment Statistics Program (LAUS), a cooperative program with the U.S. Department of Labor, Bureau of Labor Statistics ([www.bls.gov/lau](http://www.bls.gov/lau)) and the Vermont Department of Labor ([www.vtmi.info/laus.cfm](http://www.vtmi.info/laus.cfm)).

**Table 2. Vermont Labor Market Areas, Labor Force Estimates  
not seasonally adjusted**

Labor Market Area <sup>1</sup>	Civilian Labor Force	February 2021		Unemployment Rate <sup>2</sup> (%)		
		Employed	Unemployed	Feb-21	Jan-21	Feb-20
Vermont Total	310,194	300,103	10,091	3.3	3.7	2.6
Barre-Montpelier	23,604	22,949	655	2.8	3.1	2.9
Bennington	9,778	9,371	407	4.2	4.7	3.5
Brattleboro	19,352	18,557	795	4.1	4.6	2.4
Burlington-South Burlington	114,312	111,150	3,162	2.8	3.2	2.0
Derby	11,016	10,530	486	4.4	4.8	5.8
Highgate	8,607	8,295	312	3.6	4.0	3.1
Manchester	9,534	9,163	371	3.9	4.4	2.8
Middlebury	17,194	16,694	500	2.9	3.1	2.8
Morristown-Waterbury	15,264	14,659	605	4.0	4.4	3.6
Newbury	2,527	2,430	97	3.8	4.2	3.5
Northfield-Waitsfield	6,462	6,296	166	2.6	2.8	2.2
Randolph	6,479	6,276	203	3.1	3.6	3.2
Rutland	18,800	18,073	727	3.9	4.4	2.8
Springfield	9,936	9,613	323	3.3	3.7	2.3
St. Johnsbury	12,405	11,965	440	3.5	3.9	3.8
White River Junction	18,595	18,031	564	3.0	3.6	2.0
Woodstock	3,419	3,275	144	4.2	4.8	1.7

<sup>1</sup>The area names above are common language titles; for official names of areas including encompassing cities and towns please refer to the Vermont Labor Market Area map (<http://www.vtmi.info/lmadef2015.pdf>).

<sup>2</sup>Rate is an estimate for number of unemployed divided by total labor force, expressed as a percent.

Source: Local Area Unemployment Statistics Program (LAUS) produced by the Vermont Department of Labor ([www.vtmi.info/laus.cfm](http://www.vtmi.info/laus.cfm)) in cooperation with the U.S. Bureau of Labor Statistics ([www.bls.gov/lau](http://www.bls.gov/lau)).



**Table 3. Vermont Nonfarm Payroll Employment, seasonally adjusted (thousands)**

NAICS Industry	Feb-21	Jan-21	Feb-20	Change From:		% Change From:	
	Prelim	Revised	Revised	Jan-21	Feb-20	Jan-21	Feb-20
<b>Statewide, Total Nonfarm</b>	<b>286.9</b>	<b>287.4</b>	<b>314.5</b>	<b>-0.5</b>	<b>-27.6</b>	<b>-0.2</b>	<b>-8.8</b>
<b>Total Private</b>	<b>235.8</b>	<b>236.6</b>	<b>258.5</b>	<b>-0.8</b>	<b>-22.7</b>	<b>-0.3</b>	<b>-8.8</b>
Mining, Logging and Construction	15.5	15.5	16.1	0.0	-0.6	0.0	-3.7
Mining & Logging	0.8	0.8	0.8	0.0	0.0	0.0	0.0
Construction	14.7	14.7	15.3	0.0	-0.6	0.0	-3.9
Manufacturing	28.9	28.6	29.9	0.3	-1.0	1.0	-3.3
Durable Goods	17.5	17.4	18.3	0.1	-0.8	0.6	-4.4
Non-Durable Goods	11.4	11.2	11.6	0.2	-0.2	1.8	-1.7
Trade, Transportation and Utilities	50.3	50.9	53.8	-0.6	-3.5	-1.2	-6.5
Wholesale Trade	8.1	8.2	9.1	-0.1	-1.0	-1.2	-11.0
Retail Trade	34.2	34.6	36.5	-0.4	-2.3	-1.2	-6.3
Trans., Warehousing & Utilities	8.0	8.1	8.2	-0.1	-0.2	-1.2	-2.4
Information	3.9	3.9	4.3	0.0	-0.4	0.0	-9.3
Financial Activities	11.8	11.9	12.3	-0.1	-0.5	-0.8	-4.1
Finance & Insurance	9.0	9.0	9.2	0.0	-0.2	0.0	-2.2
Real Estate, Rental & Leasing	2.8	2.9	3.1	-0.1	-0.3	-3.4	-9.7
Professional and Business Services	29.6	29.6	30.0	0.0	-0.4	0.0	-1.3
Professional & Technical Services	15.7	15.4	15.4	0.3	0.3	1.9	1.9
Administrative & Waste Services	11.9	12.1	12.4	-0.2	-0.5	-1.7	-4.0
Education and Health Services	61.9	62.4	65.5	-0.5	-3.6	-0.8	-5.5
Private Educational Services	12.0	12.2	13.0	-0.2	-1.0	-1.6	-7.7
Health Care & Social Assistance	49.9	50.2	52.5	-0.3	-2.6	-0.6	-5.0
Leisure and Hospitality	24.6	24.4	36.4	0.2	-11.8	0.8	-32.4
Arts, Entertainment & Recreation	3.2	2.9	4.4	0.3	-1.2	10.3	-27.3
Accommodation & Food Services	21.4	21.5	32.0	-0.1	-10.6	-0.5	-33.1
Other Services	9.3	9.4	10.2	-0.1	-0.9	-1.1	-8.8
<b>Government</b>	<b>51.1</b>	<b>50.8</b>	<b>56.0</b>	<b>0.3</b>	<b>-4.9</b>	<b>0.6</b>	<b>-8.8</b>
Federal	7.0	7.1	7.2	-0.1	-0.2	-1.4	-2.8
State	17.3	17.0	18.7	0.3	-1.4	1.8	-7.5
Local	26.8	26.7	30.1	0.1	-3.3	0.4	-11.0
<b>Burlington-S. Burlington Metro (NECTA)</b>	<b>116.1</b>	<b>116.3</b>	<b>126.3</b>	<b>-0.2</b>	<b>-10.2</b>	<b>-0.2</b>	<b>-8.1</b>
<b>Total Nonfarm</b>							

Source: Current Employment Statistics Program (CES) produced by the Economic and Labor Market Information Division, Vermont Department of Labor ([www.vtلمي.info/ces.cfm](http://www.vtلمي.info/ces.cfm)) in cooperation with the U.S. Bureau of Labor Statistics ([www.bls.gov/sae](http://www.bls.gov/sae)).

Estimates are preliminary and subject to revision. See Annual Summary for details.



**Table 4. Vermont Nonfarm Payroll Employment, not seasonally adjusted**

NAICS Industry	Feb-21	Jan-21	Feb-20	Change From:		% Change From:	
	Prelim	Revised	Revised	Jan-21	Feb-20	Jan-21	Feb-20
<b>TOTAL NONFARM</b>	<b>288,200</b>	<b>285,600</b>	<b>315,700</b>	<b>2,600</b>	<b>-27,500</b>	<b>0.9</b>	<b>-8.7</b>
<b>TOTAL PRIVATE</b>	<b>234,700</b>	<b>234,700</b>	<b>258,000</b>	<b>0</b>	<b>-23,300</b>	<b>0.0</b>	<b>-9.0</b>
<b>GOODS-PRODUCING</b>	<b>41,500</b>	<b>41,300</b>	<b>44,000</b>	<b>200</b>	<b>-2,500</b>	<b>0.5</b>	<b>-5.7</b>
MINING, LOGGING AND CONSTRUCTION	12,800	13,100	14,200	-300	-1,400	-2.3	-9.9
Mining & Logging	700	700	700	0	0	0.0	0.0
Construction	12,100	12,400	13,500	-300	-1,400	-2.4	-10.4
MANUFACTURING	28,700	28,200	29,800	500	-1,100	1.8	-3.7
Durable Goods	17,300	17,100	18,300	200	-1,000	1.2	-5.5
Non-Durable Goods	11,400	11,100	11,500	300	-100	2.7	-0.9
Food Mfg.	5,200	5,200	5,300	0	-100	0.0	-1.9
<b>SERVICE-PROVIDING</b>	<b>246,700</b>	<b>244,300</b>	<b>271,700</b>	<b>2,400</b>	<b>-25,000</b>	<b>1.0</b>	<b>-9.2</b>
TRADE, TRANSPORTATION AND UTILITIES	49,600	50,600	53,200	-1,000	-3,600	-2.0	-6.8
Wholesale Trade	8,000	8,100	9,100	-100	-1,100	-1.2	-12.1
Retail Trade	33,900	34,300	36,000	-400	-2,100	-1.2	-5.8
Food & Beverage Stores	9,200	9,300	9,800	-100	-600	-1.1	-6.1
General Merchandise Stores	2,900	3,000	3,100	-100	-200	-3.3	-6.5
Transportation, Warehousing & Utilities	7,700	8,200	8,100	-500	-400	-6.1	-4.9
Transportation & Warehousing	6,600	7,000	6,900	-400	-300	-5.7	-4.3
Utilities	1,100	1,200	1,200	-100	-100	-8.3	-8.3
INFORMATION	3,900	3,900	4,300	0	-400	0.0	-9.3
FINANCIAL ACTIVITIES	11,700	11,600	12,200	100	-500	0.9	-4.1
Finance & Insurance	9,000	8,900	9,200	100	-200	1.1	-2.2
Real Estate, Rental & Leasing	2,700	2,700	3,000	0	-300	0.0	-10.0
PROFESSIONAL AND BUSINESS SERVICES	28,800	28,600	29,000	200	-200	0.7	-0.7
Professional & Technical Services	15,500	15,300	15,300	200	200	1.3	1.3
Administrative & Waste Services	11,300	11,300	11,500	0	-200	0.0	-1.7
EDUCATION AND HEALTH SERVICES	62,700	62,300	66,100	400	-3,400	0.6	-5.1
Educational Services	12,900	12,200	13,800	700	-900	5.7	-6.5
Colleges and Universities	8,300	7,400	8,400	900	-100	12.2	-1.2
Health Care & Social Assistance	49,800	50,100	52,300	-300	-2,500	-0.6	-4.8
Ambulatory Health Care Services	16,400	16,500	17,400	-100	-1,000	-0.6	-5.7
Hospitals	13,800	13,800	14,400	0	-600	0.0	-4.2
Nursing & Residential Care Facilities	7,000	7,100	7,400	-100	-400	-1.4	-5.4
Social Assistance	12,600	12,700	13,100	-100	-500	-0.8	-3.8
LEISURE AND HOSPITALITY	27,200	27,200	39,100	0	-11,900	0.0	-30.4
Arts, Entertainment & Recreation	2,900	2,700	4,100	200	-1,200	7.4	-29.3
Accommodation & Food Services	24,300	24,500	35,000	-200	-10,700	-0.8	-30.6
Accommodation	10,500	10,500	15,000	0	-4,500	0.0	-30.0
Hotels & Motels	9,700	9,800	14,000	-100	-4,300	-1.0	-30.7
Food Services & Drinking Places	13,800	14,000	20,000	-200	-6,200	-1.4	-31.0
OTHER SERVICES	9,300	9,200	10,100	100	-800	1.1	-7.9
<b>GOVERNMENT</b>	<b>53,500</b>	<b>50,900</b>	<b>57,700</b>	<b>2,600</b>	<b>-4,200</b>	<b>5.1</b>	<b>-7.3</b>
Federal Government	7,000	7,100	7,100	-100	-100	-1.4	-1.4
State Government	9,400	7,200	10,300	2,200	-900	30.6	-8.7
Other State Government	9,100	9,100	9,400	0	-300	0.0	-3.2
Local Government	20,900	20,400	23,300	500	-2,400	2.5	-10.3
Other Local Government	7,100	7,100	7,600	0	-500	0.0	-6.6

Source: Current Employment Statistics Program (CES) produced by the Economic and Labor Market Information Division, Vermont Department of Labor ([www.vtلمي.info/ces.cfm](http://www.vtلمي.info/ces.cfm)) in cooperation with the U.S. Bureau of Labor Statistics ([www.bls.gov/sae](http://www.bls.gov/sae)).

Estimates are preliminary and subject to revision. See Annual Summary for details.

###

